



THE UVA
FOUNDATION
PURCHASED WESTOVER
AND APPROXIMATELY
325 ACRES IN 1986
ON BEHALF OF THE
UNIVERSITY OF
VIRGINIA



WATCH THE SUNSET BEHIND THE BLUE
RIDGE MOUNTAINS AS YOU ENJOY COCKTAILS
ON THE VERANDA.

SERVE YOUR GUESTS DINNER BY THE FIRE IN
THE FORMAL DRAWING ROOM.

ENJOY LUXURY AND SERENITY ONLY A FEW
MILES FROM THE ROTUNDA.

FOR MORE INFORMATION
PLEASE CONTACT
LAURA PENCE
(434) 982-4841
lgp5a@virginia.edu

WELCOME TO
Westover

UVA FOUNDATION
ONE BOAR'S HEAD POINTE
P.O. Box 400218
CHARLOTTESVILLE, VA 22904
WWW.UVAFOUNDATION.COM





Grand Style

LARGE GROUPS MAY DINE IN THE FORMAL DINING ROOM, PANELED DRAWING ROOM, OR THE GLASS WALLED SUN-PORCH

DURING AGREEABLE WEATHER, TENTS MAY BE PLACED ON THE SPACIOUS LAWN AND BOXWOOD GARDENS, OR GUESTS MAY ENJOY THE OUTDOORS ON THE SPRAWLING VERANDA

THE FOYER PROVIDES AMPLE ROOM FOR RECEIVING GUESTS



THE DINING ROOM FEATURES AN ADAMS STYLE MANTELPIECE

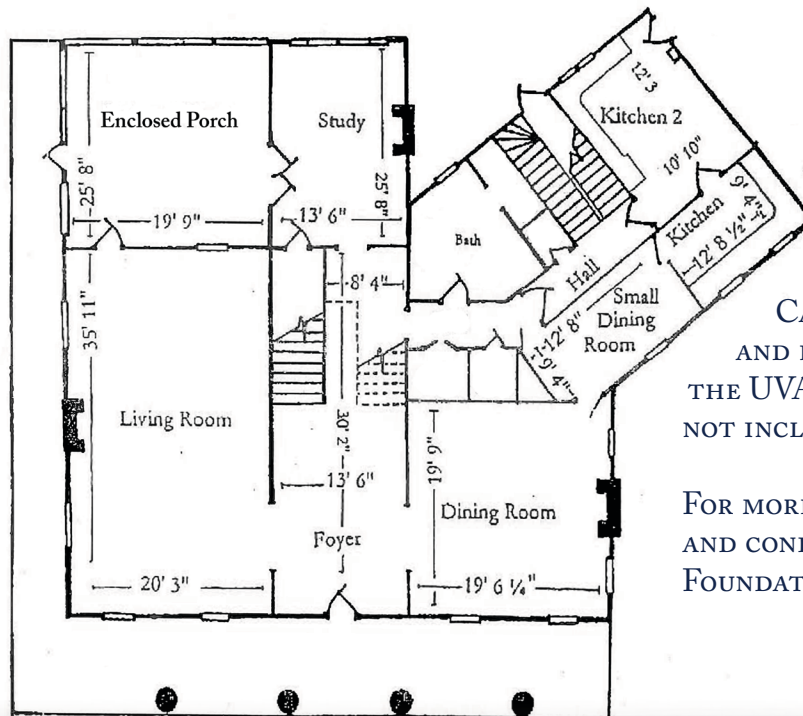


WESTOVER IS HOME TO A FAMILY, AND GUESTS WILL SENSE THEY ARE ENTERTAINED IN A WELL-APPOINTED RESIDENCE

Intimate Gatherings

SMALLER GROUPS MAY ENJOY A COZY EVENING BY THE FIRE IN THE STUDY

BUILT BY P.H. FAULCONER CIRCA 1915 AND DESIGNED BY ARCHITECT CLAUDE K. HOWELL, THIS GREEK REVIVAL HOME WAS FEATURED IN *BETTER HOMES MAGAZINE* IN THE 1900's



Catering & Fees

CATERING, EVENT SET-UP, TENT SET-UP AND PARKING, IF NEEDED, IS HANDLED BY THE UVA ENTITY HOSTING THE EVENT AND IS NOT INCLUDED IN THE FEE TO RENT WESTOVER

FOR MORE INFORMATION ON FEES, TERMS AND CONDITIONS, PLEASE CONTACT THE UVA FOUNDATION

Directions

NORTH/SOUTH

- From Route 29, take the Lynchburg/Staunton 250 West exit
- Take the Charlottesville/Ivy exit for Local Traffic (2nd exit off bypass)
- Turn right onto Old Garth Road (just before railroad pass)
- Westover is first drive on the right at crest hill

EAST/WEST

- From 1-64 take exit 118B
- Take the 2nd exit off the 250/29 bypass
- Turn left onto Route 250 West
- Continue through one traffic light, and make a sharp right at the second traffic light (continue under railroad overpass)
- Take first left onto Old Garth Road
- Westover is first drive on right at crest of hill

